

The background of the entire poster is a close-up photograph of a wooden spinning wheel. The wheel's spokes and rim are made of dark, polished wood. Behind the wheel is a vibrant quilt with a geometric pattern of red, yellow, and dark blue triangles. The yellow sections of the quilt feature a small red floral pattern.

The Center for
American Material Culture Studies
at the University of Delaware

Presents

The Second Annual

Material Culture Symposium for Emerging Scholars

Saturday, April 17, 2004

Copeland Lecture Hall
Winterthur Museum, Garden, and Library
Winterthur, Delaware

Design by Dan Claro

Introduction

This annual symposium provides emerging scholars with a venue for promoting interdisciplinary dialogues about material culture. By freeing scholars of chronological and topical restraints, we seek to encourage conversation across perceived boundaries of discipline, medium, and methodology.

Created and organized by University of Delaware graduate students, this symposium is the only such totally interdisciplinary event at the graduate (or recently graduated) student level. It is a forum for emerging scholars to present and discuss their work, bringing together new and established scholars to foster camaraderie and exchange.

This year, twelve students from nine institutions—including departments of Anthropology, American Studies, History, Art History, Museum Studies and programs in the History of American Civilization and the Winterthur Program in Early American Culture—will present papers.

We are honored to have the following scholars as discussion leaders and commentators: Dr. Kathleen Adair Foster, Dr. Lu Ann De Cunzo, Dr. Amanda Kemp, Prof. Kym Rice, and Dr. Ann Smart Martin.



Acknowledgements

The Material Culture Symposium for Emerging Scholars celebrates its second year thanks to the generosity and vision of many organizations and individuals.

The conference is co-sponsored by the Center for American Material Culture Studies, an umbrella entity composed of allied programs at the University of Delaware. The organizers acknowledge generous support from the Delaware Seminar on Art, History, and Material Culture, the Delaware Humanities Foundation, the University of Delaware Departments of History and Art History, the Office of Women's Affairs, and the Winterthur Program.

The symposium planning committee included the following University of Delaware graduate students: from History of American Civilization, Zara Anishanslin-Bernhardt, Heather Boyd, Elise Madeleine Ciregna, Dan Claro, Frances Davey, Bryn Hollenbeck and Hillary Murtha; from History, Ken Cohen and Colleen Lemke; from the Winterthur Program, Kathy Haas; from the Center for Historic Architecture and Design, Catherine Hoffman Kaser; and from Art History, Tanya Pohrt and Lori Miller.

Dr. J. Ritchie Garrison and Dr. Bernard Herman served as faculty advisors. Alison Brayfield provided administrative support. Dan Claro designed and assembled the mail-out pamphlet and day-of brochure.

The planning committee would also like to extend a special thanks to Winterthur Museum, Garden and Library for hosting us a second year; to Raymond Nichols, Professor of Art, University of Delaware for designing the website; to Winterthur Librarians Cate Cooney and Jeanne Solensky for welcoming special tours; and to the following University of Delaware faculty: Dr. Anne Bowler, Department of Sociology, Dr. Martin Brueckner, Department of English, Dr. Michael Leja, Department of Art History, and Dr. Gretchen Buggeln, Winterthur Museum, Garden and Library.



Morning Program

REGISTRATION: 8:00 – 8:45

WELCOME ADDRESS: 8:45 – 9:00

Elise Madeleine Ciregna
Graduate Student Chair, Symposium Planning Committee, and graduate student, History of American Civilization, University of Delaware
Dr. Bernard Herman
Director, Center for American Material Culture Studies, University of Delaware

PANEL 1: 9:00 – 10:30

Patricia J. Keller
History of American Civilization, University of Delaware
Significant Patterns, Strategic Designs:
Quilts and Quiltmaking After the "Age of
Homespun"

Ethan Lasser
History of Art, Yale University
To Go 'Round the World on a High Chest:
Japanned Furniture and the Enlightened
Home in Eighteenth Century Boston

Erik J. Larson
Cooperstown Graduate Program, History Museum Studies, State University College at Oneonta
The Material Culture of Transition: Melamine
dinnerware 1943-2004

Comments by Dr.
Kathleen Adair
Foster
Robert L. McNeil
*Curator and Director
of the Center for
American Art at the
Philadelphia Museum
of Art.*

**COFFEE BREAK:
10:30 – 10:45**



**PANEL 2:
10:45 – 12:15**

Daniel Claro
History of American Civilization, University of Delaware
John Chute Esq.
and the Suits at the
Vyne: An English
Gentleman's Dress
and Masculinity,
1740-1776



Kirsten E. Lombard
Historic Environmental Design: Interior and Landscape, University of Wisconsin-Madison
Louis XV's Gardens at Petit Trianon:
Strategies in a Material Culture Approach to
the Historic Built Environment

Christina Harris
Anthropology, CUNY Graduate School and University Center
Mediators in the Transnational Marketplace:
Wholesalers of Tibetan Ceremonial Scarves

Comments by Kym Rice
*Assistant Director of Museum Studies Program,
George Washington University*

**RESEARCH FELLOWSHIPS AT WINTERTHUR:
12:15 – 12:30**

Dr. Gary Kulik
Deputy Director for Library, Collection Management, and Academic Programs, Winterthur Museum, Garden & Library
Introduction to the material culture and
graduate resources at Winterthur.

Afternoon Program

PANEL 3: 1:30 – 3:00

Hadley F. Kruczek-Aaron
Anthropology, Syracuse University
Material Sacrifice: Simplicity, Self-Denial, and
the Material Culture of Everyday Life

Kelli Lucas
*Winterthur Program in Early American Culture,
University of Delaware*
How the Other Half Saw Themselves:
Photographs and Fictions on the Lower East
Side

Jonathan C. Smith
*Assistant Professor, American Studies, Saint Louis
University*
'Speak for Me': Understanding the African
American Funeral Program

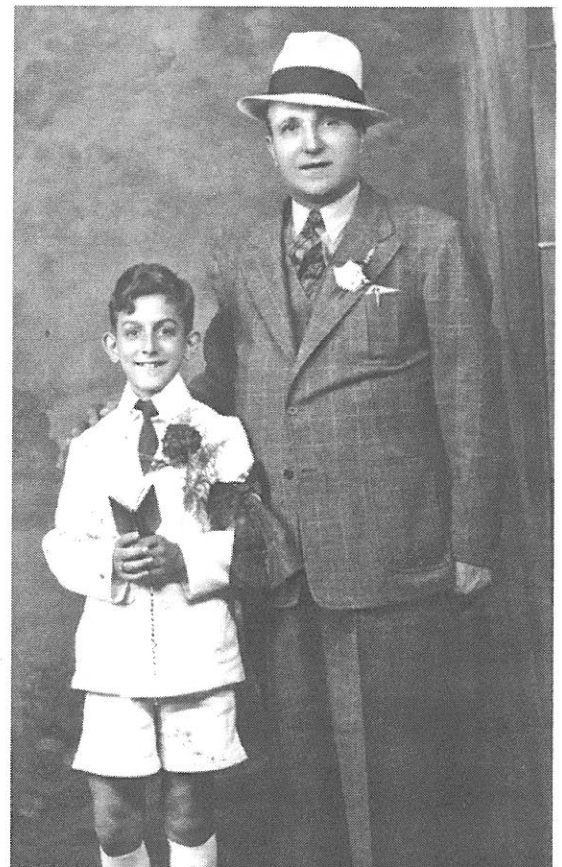
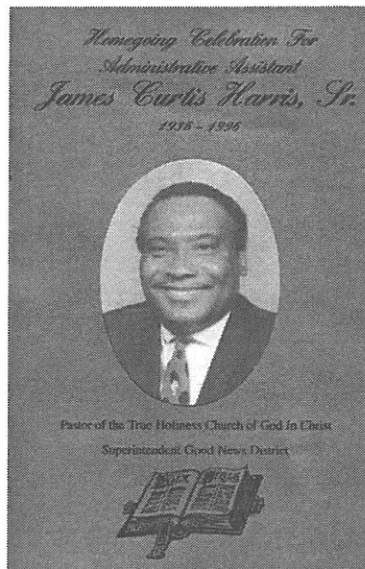
Comments by Dr. Amanda Kemp
*Adjunct Assistant Professor of American Studies
and Research Associate in Africana Studies,
Franklin and Marshall College*

PANEL 4: 3:00 – 4:30

Kari Main
American Studies, Yale University
'Utah's Attic': Daughters of the Utah
Pioneers as Keepers of Cultural Memory

Ruth Bergman
*American Studies,
University
of Maryland*
Domesticity
Undercover:
Canvas Shelters
and the 'Age of
Homespun'

Melissa Renn
*Art History, Boston
University*
From Journal
to Catalog: The



Transformation of Arts and Crafts Ideology in
Gustav Stickley's 'The Craftsman'"

Comments by Dr. LuAnn De Cunzo
*Associate Professor of Anthropology, University of
Delaware*

SUMMARY ADDRESS: 4:30 – 4:45

Dr. Ann Smart Martin
*Chipstone Professor of American Decorative Arts,
University of Wisconsin-Madison*

CLOSING REMARKS: 4:45 – 5:00

Elise Madeleine Ciregna
*Graduate Student Chair, Symposium Planning
Committee*

Commentators

Ann Smart-Martin, M.A., Ph.D.

*Chipstone Professor of American Decorative Arts,
University of Wisconsin-Madison*

Dr. Smart-Martin heads the interdisciplinary Material Culture Program at the University of Wisconsin. Among her many publications are a survey of the famed Chipstone Collection of American Decorative Arts and the editorship of both the *William and Mary Quarterly's* special issue on Material Culture in 1996, and *American Material Culture: The Shape of the Field* (co-edited with Ritchie Garrison).

Kathleen Adair Foster, M.A., Ph.D.

*Robert L. McNeil Curator and Director of Center
for American Art at the Philadelphia Museum of
Art*

Prior to arriving at Philadelphia Museum of Art in 2002, Dr. Foster was a member of the graduate faculty in the History of Art and was Senior Scholar and Curator of Modern Art at Indiana University. Her book *Thomas Eakins Rediscovered* was co-winner of the 1998 Eric Mitchell Prize, and the project helped inspire the recent major exhibition on Eakins at the PMA.

Kym Rice, M.A.

*Assistant Director of Museum Studies Program,
George Washington University*

Professor Rice teaches at both George Washington and the Cooper-Hewitt National Design Museum's Graduate Program. She has curated major exhibitions in the Washington, D.C. area and nationwide for over fifteen years, including: "A Woman's War: Southern Women, Civil War, and the Confederate Legacy"; "Before Freedom Came: African-

American Life in the Antebellum South"; and "Southern City, National Ambition: the Growth of Early Washington, D.C., 1800-1860."

LuAnn De Cunzo, M.A., Ph.D.

*Associate Professor of Anthropology, University of
Delaware*

Dr. De Cunzo's archaeological research on the power of ritual in institutional communities in nineteenth-century America has been published as a monograph issue of *Historical Archaeology*, in the *International Journal of Historical Archaeology*, and in *Landscape Archaeology*. Forthcoming from the University of Tennessee Press is *People, Places, and Histories of Delaware: An Historical Archaeology of the Cultures of Agriculture*.

Amanda Kemp, Ph.D.

*Adjunct Assistant Professor of American Studies
and Research Associate in Africana Studies,
Franklin and Marshall College*

Dr. Kemp's research interests are race and the African Diaspora, the sign of the American Negro in South African popular culture, and eighteenth- and nineteenth-century African American assertions of identity. She is currently working on an article about African American constructions of Benjamin Franklin and her most recent performance project was "Benjamin Franklin, Abolitionist, Eighteenth Century Africans in Motion," a performance and museum exhibit that she curated, wrote, and directed.

Emerging Scholars 2005

Thank you for attending the Emerging Scholars Symposium on Material Culture. We hope that you will join us for the Third Annual Material Culture Symposium for Emerging Scholars Symposium on April 16, 2005.



A national call for papers will go out in early fall of 2004. Please visit the symposium website for further details later this year.

<http://materialculture.udel.edu>

